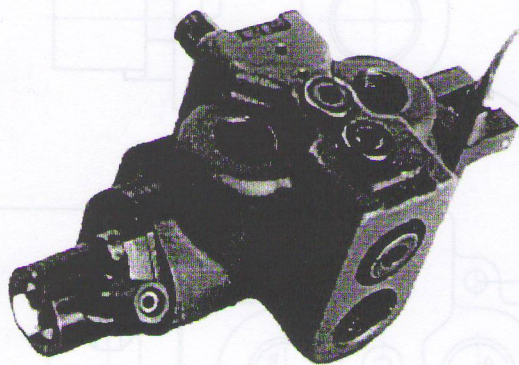


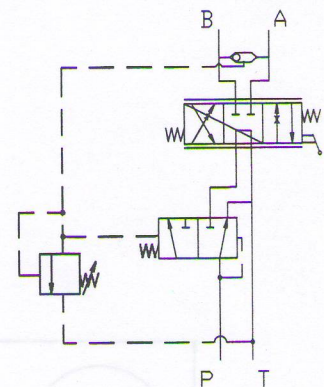
TYPE MRP 70

TECHNICAL DATA

DATA	UNIT	VALUE/RANGE
Rated flow	l/min (US GPM)	70 (18)
Rated pressure	bar (PSI)	210 (3000)
Standard port size: Inlet & outlet work ports A & B	NPT (BSP) NPT (BSP)	3/4" (3/4") 1/2" (3/4")
Working liquid- hydraulic oils with parameters: -viscosity -viscosity recommended -temperature -degree of filtration	m ² /sec (cSt) mm ² /sec (cSt) ° C (°F) mm (in)	15...300 (15...300) 20...80 (20...80) -20...+80 (-4...+176) 0.025 (9.8 ⁻⁴)0



Hydraulic scheme:

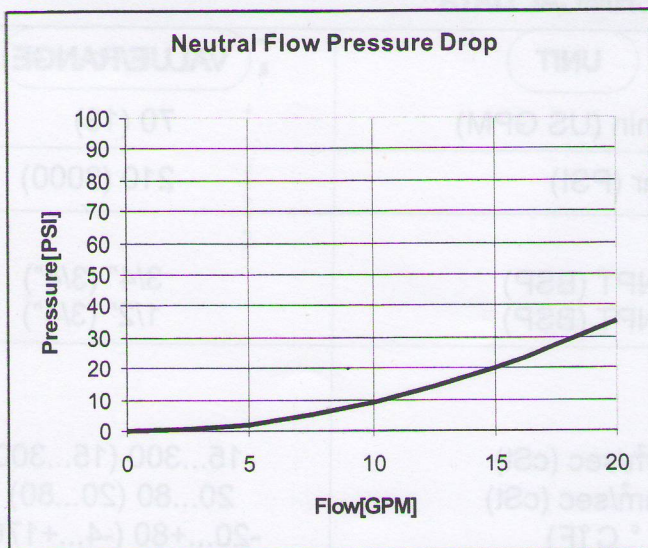


FEATURES:

1. The valve TYPE MRP 70 incorporates the features of a 4-way directional control valve , an adjustable full range pressure compensated by-pass type flow control valve and a pilot operated pressure relief valve all in one compact package.
2. Less fittings and plumbing , eliminates leakage points.
3. Fine positive metering is possible in either direction with one manually adjustable , infinitely variable lever controlling both direction and amount of flow. Amount of flow is proportional to movement of the lever
4. Flow is constant regardless of pressure variations , thus flow out the work port remains smooth and constant regardless of changes in load conditions.
5. An externally adjustable pilot relief is standard.

TYPE MRP 70

PERFORMANCE CURVE

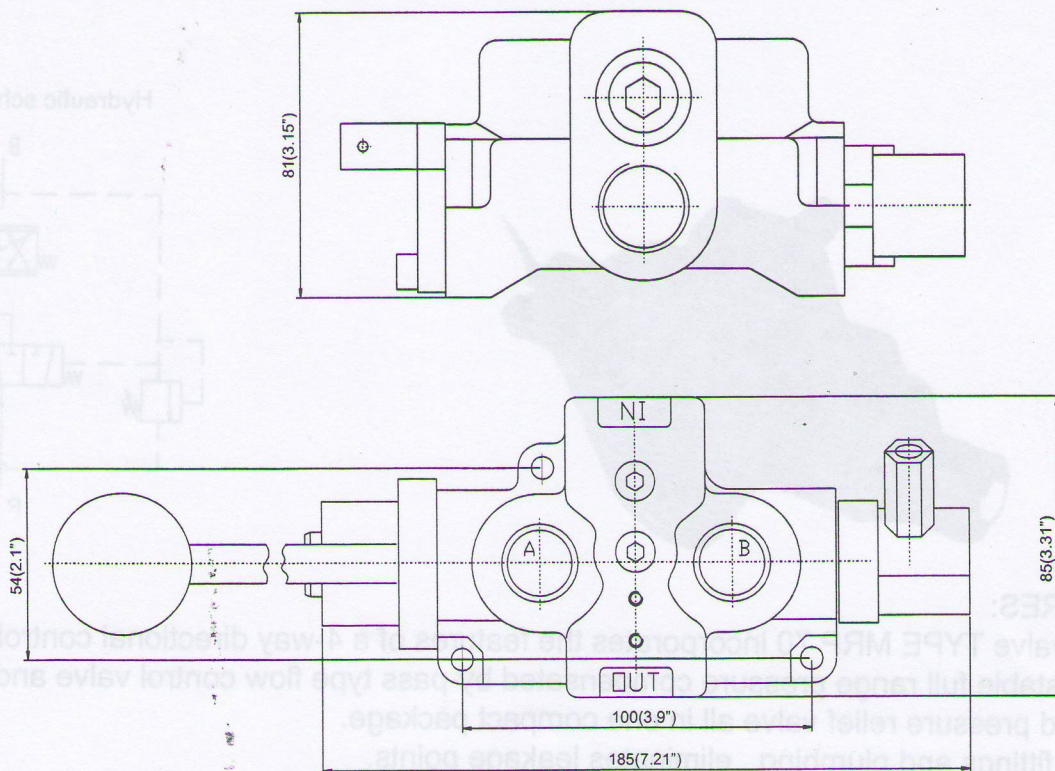


CONDITIONS:
 DP=f(Q)
 36 cSt oil viscosity
 T=40°C(104°F)

In this curve are shown the pressure difference between the inlet and outlet.

DIMENSIONS

Dimensions: All dimensions are in mm (in).



Tandem Center - Powers cylinders or motors in both directions. Pump unloads to tank when spool in neutral. Cylinder or motor blocked when spool in neutral. Designed to be used with Flow Control model.



MONOBLOCK DIRECTIONAL CONTROL VALVE TYPE RMD90

ORDERING CODE

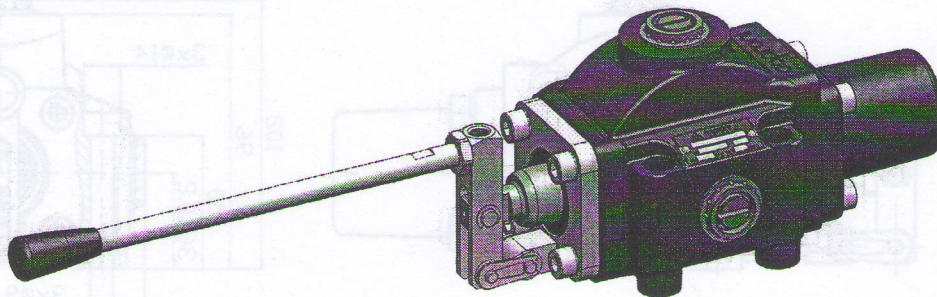
RMD90 - 1 DL 1 G

Description	Symbol	Code
Double acting, 3 position, 4 way A and B blocked in neutral		1
Double acting, 3 position, 4 way A, B and P to tank in neutral		2
Double acting, 3 position, 4 way A and B to tank in neutral		3

Code	P, T, A, B
G	G3/4"-A
K	K3/4"-14 GOST6111-52 (3/4"-14NPT)

Code	Description	Symbol
1	Spring return to neutral	
2	Detent in position 1 and 2	
3	Detent in three positions	

Lever :	with lever without lever	Code DL D
---------	-----------------------------	-----------------



Caproni
BULGARIA JOINT-STOCK COMPANY

BULGARIA, 6100 KAZANLAK, 45 STOLETOV STR.
TEL.: +359/431/62 229, +359/431/6132,
FAX: +359/431/62 230, +359/431/63 134
E-MAIL: CAPRONI@CAPRONI.BG, WEB: HTTP://WWW.CAPRONI.BG

The directional control valve RMD90 provides a change of fluid flow direction in the channels of the hydraulic system. Valve RMD90 is designed for mounting in the hydraulic systems of the mobile and industrial machines.

TECHNICAL DATA:

Weight	5.7kg
Nominal flow	90 l/min
Maximal flow	150 l/min
Nominal pressure	16 MPa
Maximal pressure	20 MPa
Working stroke of the spool	±8 mm
Spool leakage at p=100bar t=40°C and viscosity 36cSt	25 cm ³ /min
Working fluid-hydraulic oil with parameters:	viscosity - 15...300cSt recommended viscosity - 20...80cSt temperature - -20...+80°C degree of filtration - 0,025mm

DIMENSIONS:

