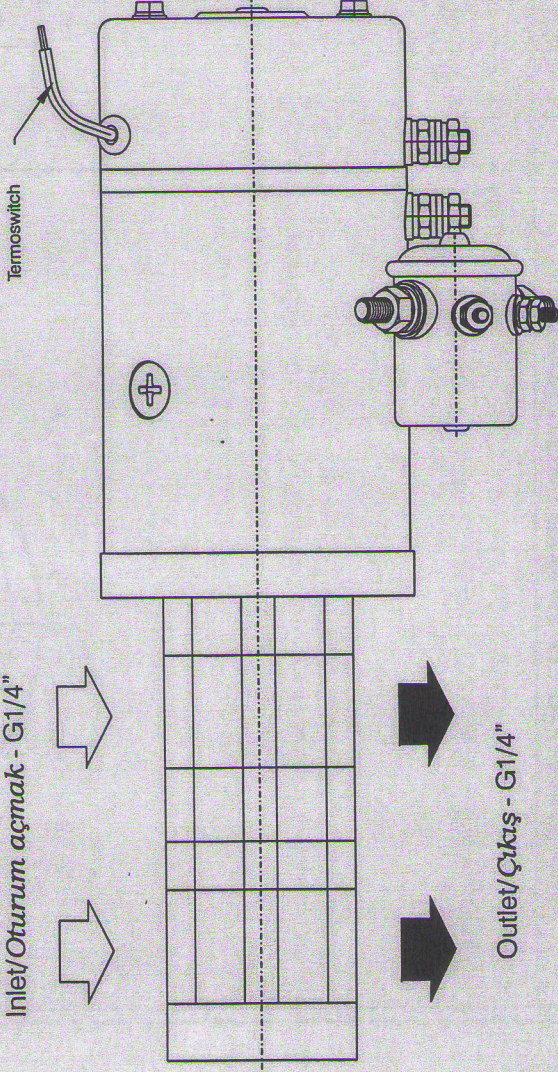


Inlet/Oturum açmak - G1/4"



Thermoswitch



Outlet/Çıkış - G1/4"

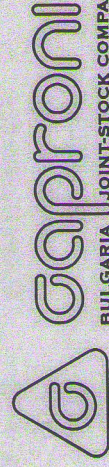


MOTOR

Voltage/Voltaj 24V DC
Power/Kuvvet 0,6kW
n=3200r.p.m
S2-2min/S2-2dakika

PUMP/POMPA

Type/Tipi 00A0,38X743/A0,38X033
Geometrical volume/Geometrik hacmi 2x0,38cc/rev.
Working pressure/Çalışma basıncı 40bat.

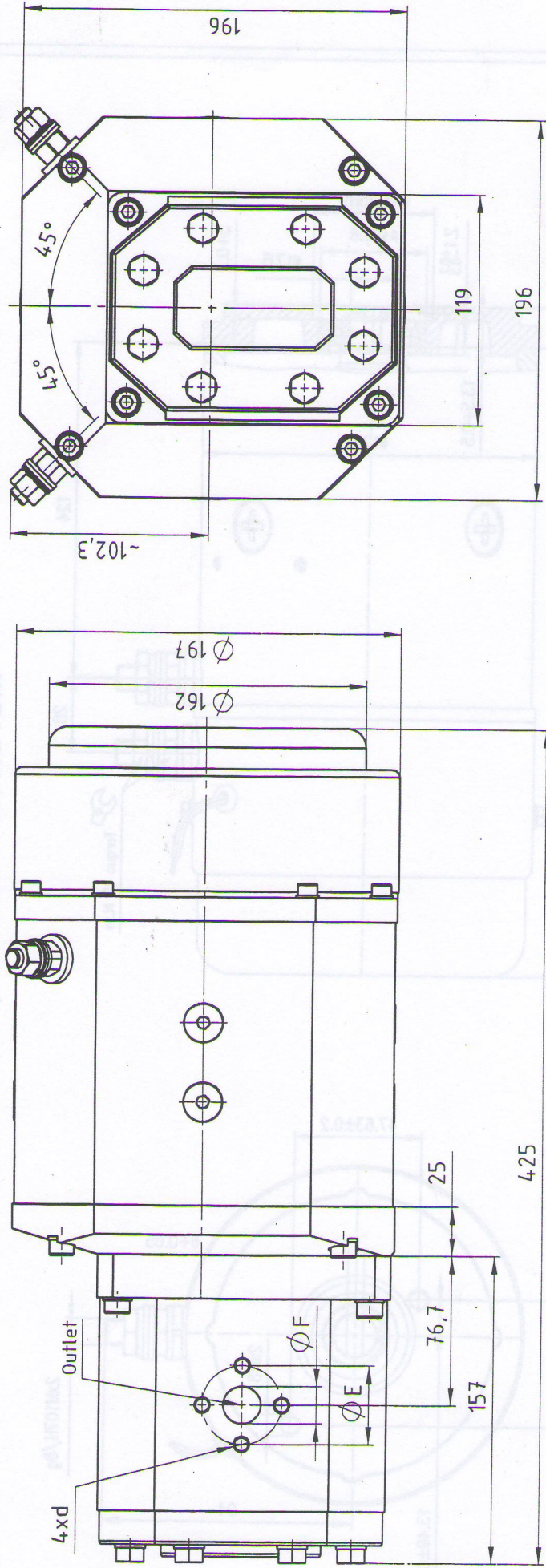


BULGARIA JOINT-STOCK COMPANY

BULGARIA, 6100 KAZANLAK, 45 STOLETOV STR.
TEL.: +359/431/62 229, +359/431/6132,
FAX: +359/431/62 230, +359/431/63 134

E-MAIL: CAPRONI@CAPRONI.BG, WEB: HTTP://WWW.CAPRONI.BG

MOTORPUMP DCM 1,5/11/28 30A55X146H

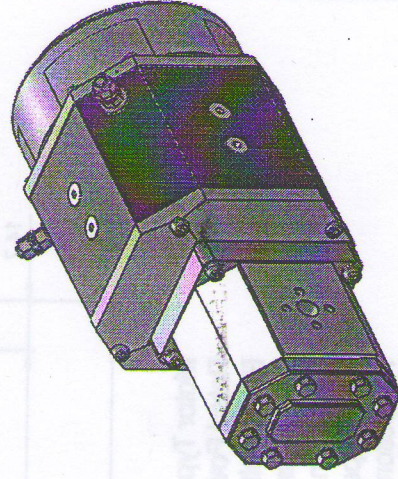


MOTOR

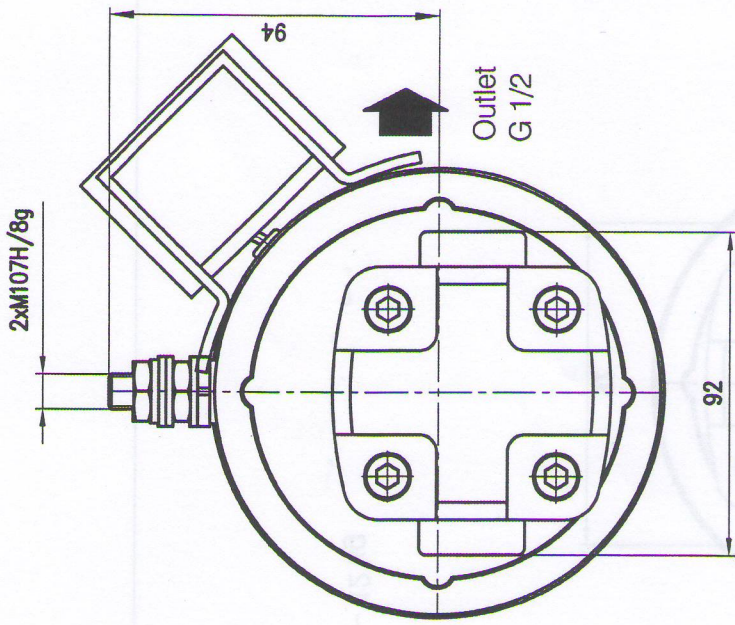
DCM 1,5/11/28
 Voltage 110V DC
 Power 1,5 kW
 $n = 2800$ r.p.m.
 S1 = continuous
 IP 54
 Current 18A
 Insulation class F

PUMP

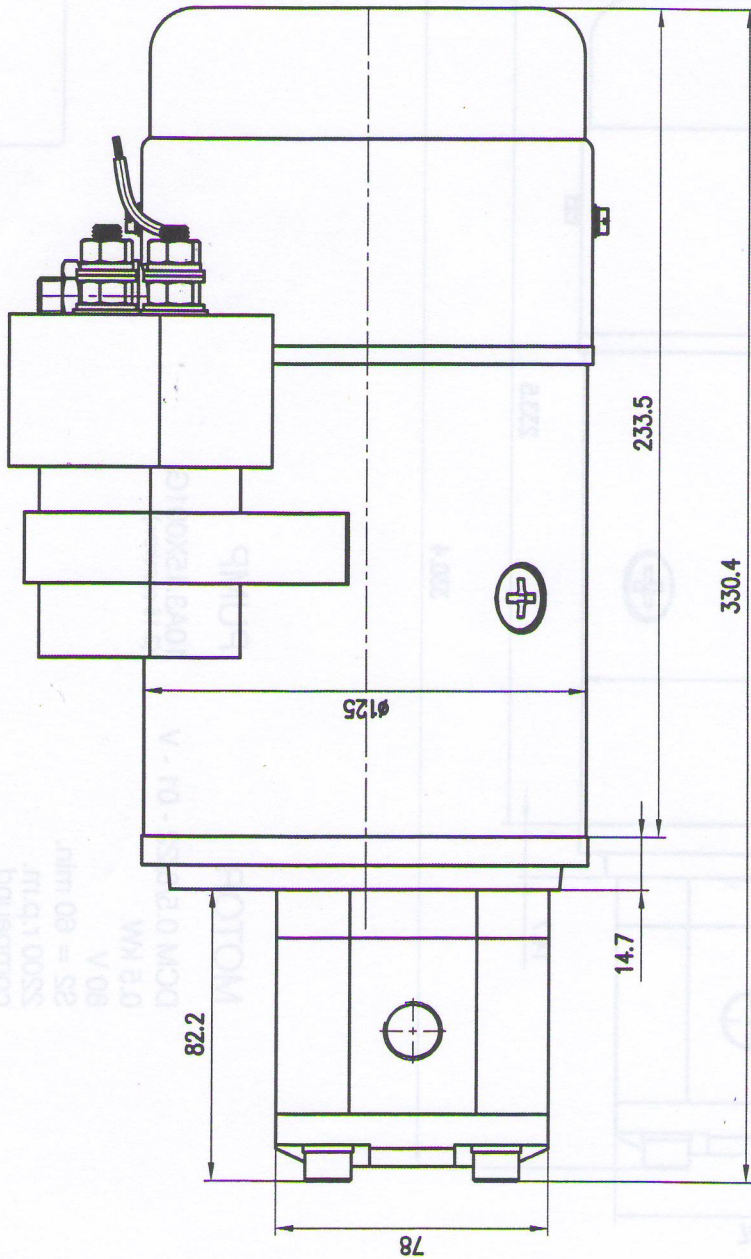
Type 30A55X146H
 Displacement 55 cc/rev.
 Working pressure up to 5 bar
 Flow 150 L./min.
 Working fluid oil with viscosity 46 cSt
 Inlet E=51 F=27 d=M10
 Outlet E=40 F=19 d=M8



MOTOR - PUMP DCM 3/2.4/35-01-V/10A3.15X001G



Weight ~ 12 kg



MOTOR

DCM 0.5/8,0/22 - 01 - V

0.5 kW

80 V

S2 = 60 min.

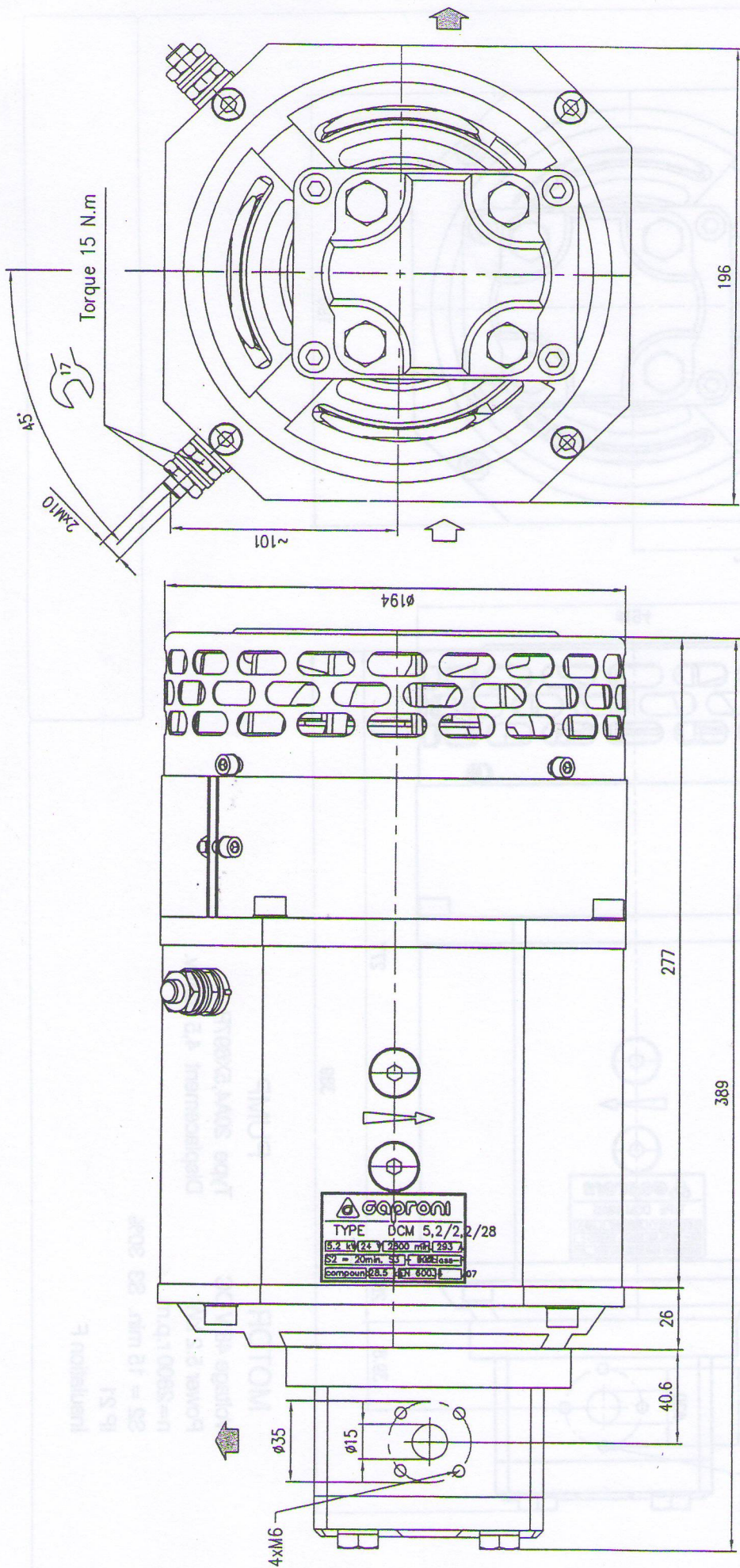
2200 r.p.m.
compound

PUMP

10A3.15X001G

(3.15 ccm/rev.)

MOTOR PUMP DCM 5.2/2.2/28/20A8.2X087



MOTOR

Voltage 24 V DC

Power 5.2 kW

n=2800 r.p.m.

S2 = 20 min. ; S3 30%

IP 21

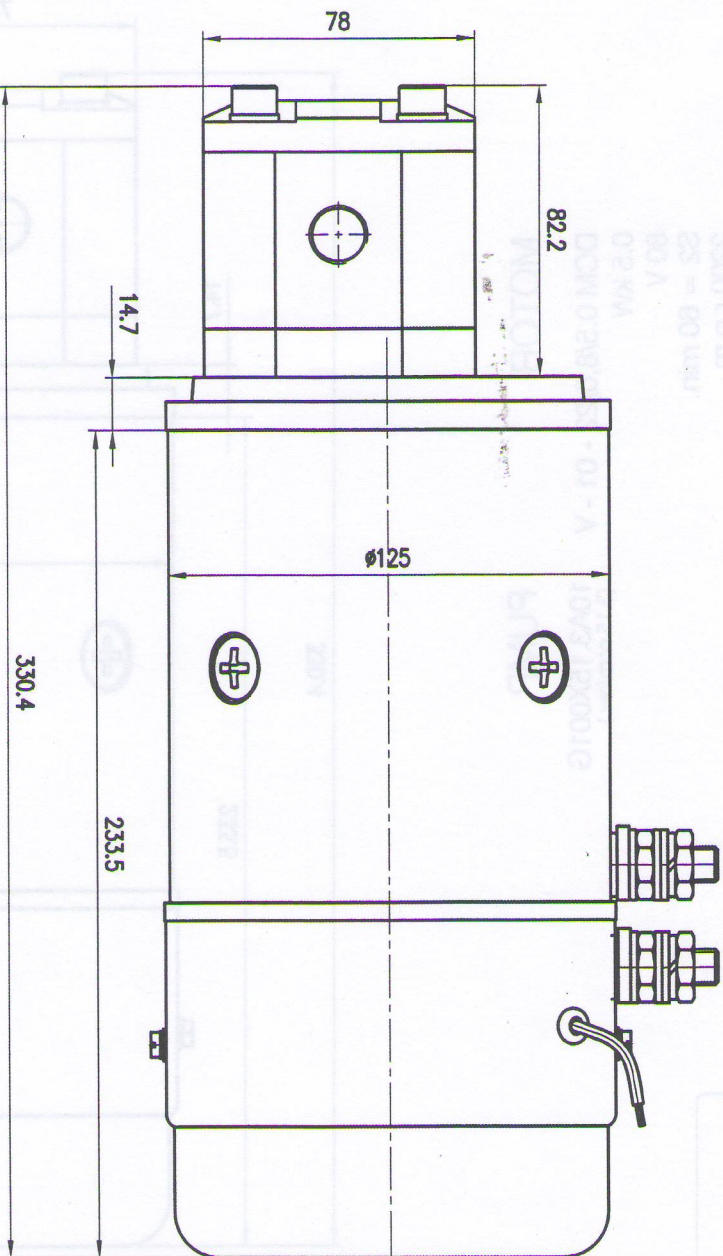
Insulation F

PUMP

Type 20A8.2X087

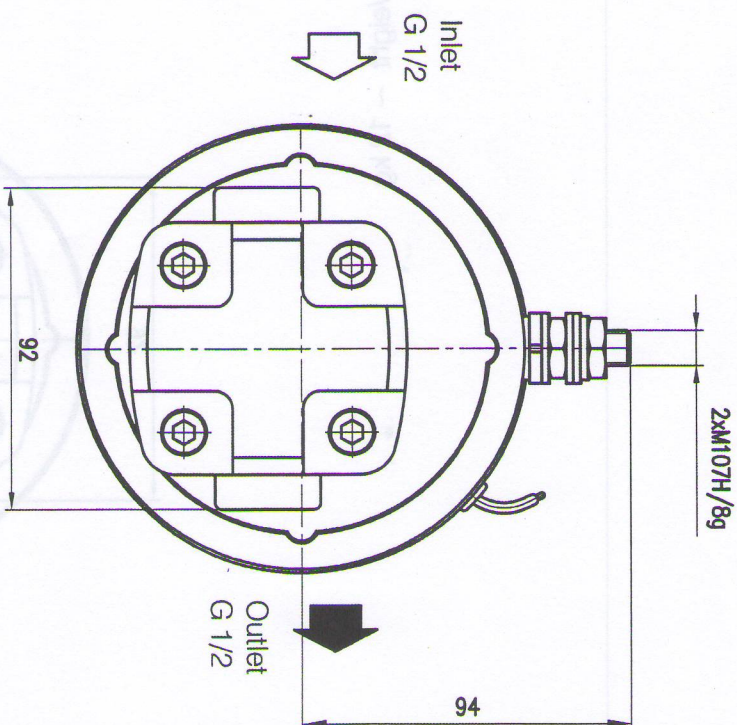
Displacement 8.2 cc/rev.

MOTOR - PUMP DCM 0.5/8/22-01-V/10A3.15X001G



MOTOR
 DCM 0.5/8/22 - 01 - V
 0.5 kW
 80 V
 S2 = 60 min.
 2200 r.p.m.
 compound

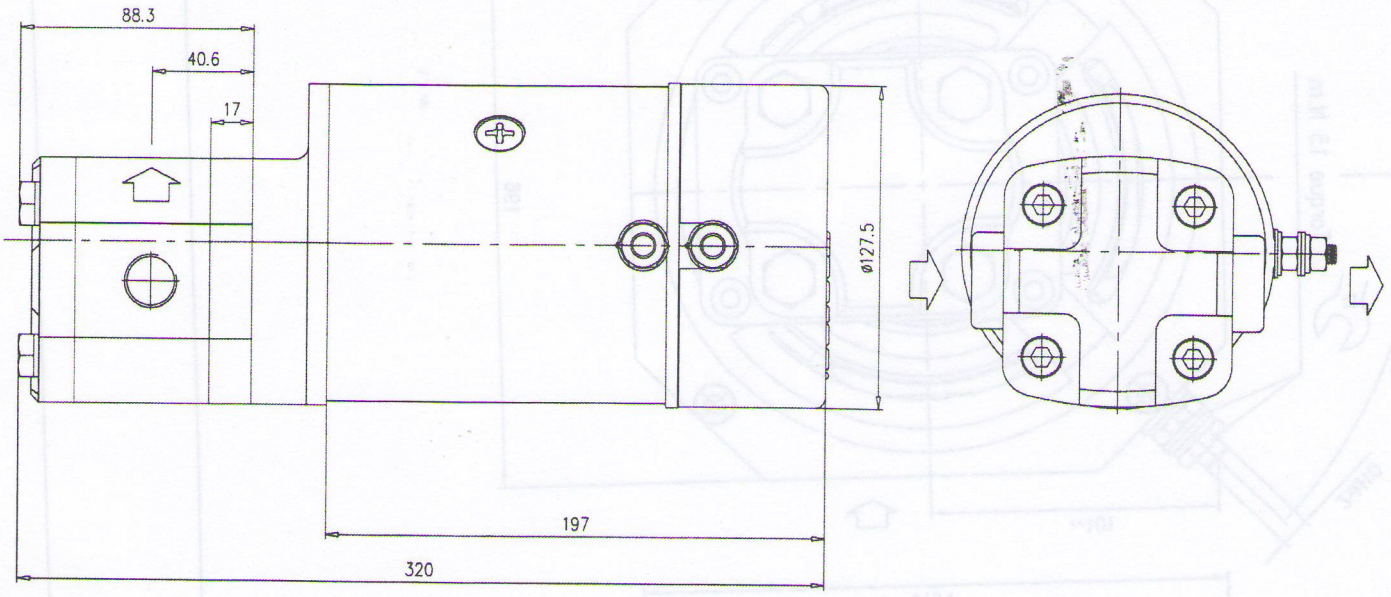
PUMP
 10A3.15X001G
 (3.15 cm³/rev.)



Weight ~ 12 kg

MOTOR - PUMP DCM 3.5 V/22-01-V/10A3.15X001G

MOTOR - PUMP DCM 3/2.4/35/10A3.15X551

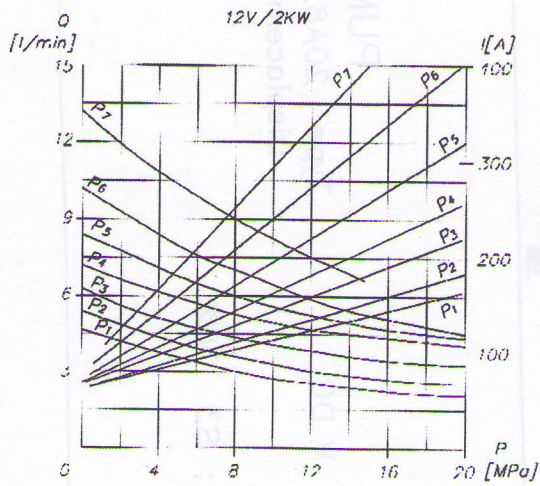


MOTOR

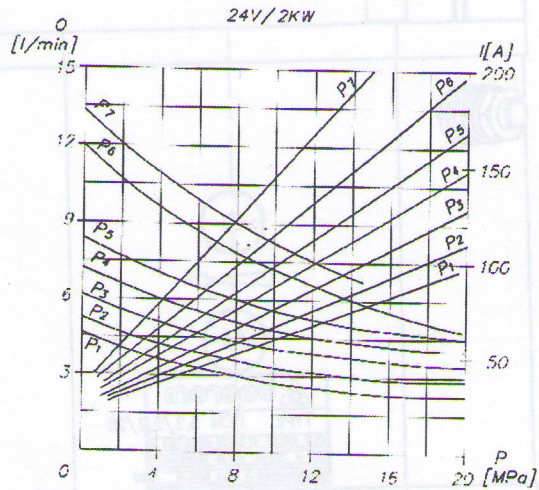
Voltage 24 V DC
 Power 3 kW
 n=3500 r.p.m.
 S 2-6 min.
 IP 20
 Insulation F

PUMP

Type 10A3.15X551
 Displacement 3.15 cc/rev.
 Inlet 1/2 NPTF - 14
 Outlet G1/2



$P_1 - 1,0$ cc/rev
 $P_2 - 1,25$ cc/rev
 $P_3 - 1,6$ cc/rev
 $P_4 - 2,0$ cc/rev
 $P_5 - 2,5$ cc/rev
 $P_6 - 3,15$ cc/rev
 $P_7 - 4,2$ cc/rev

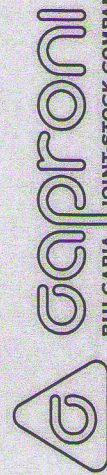
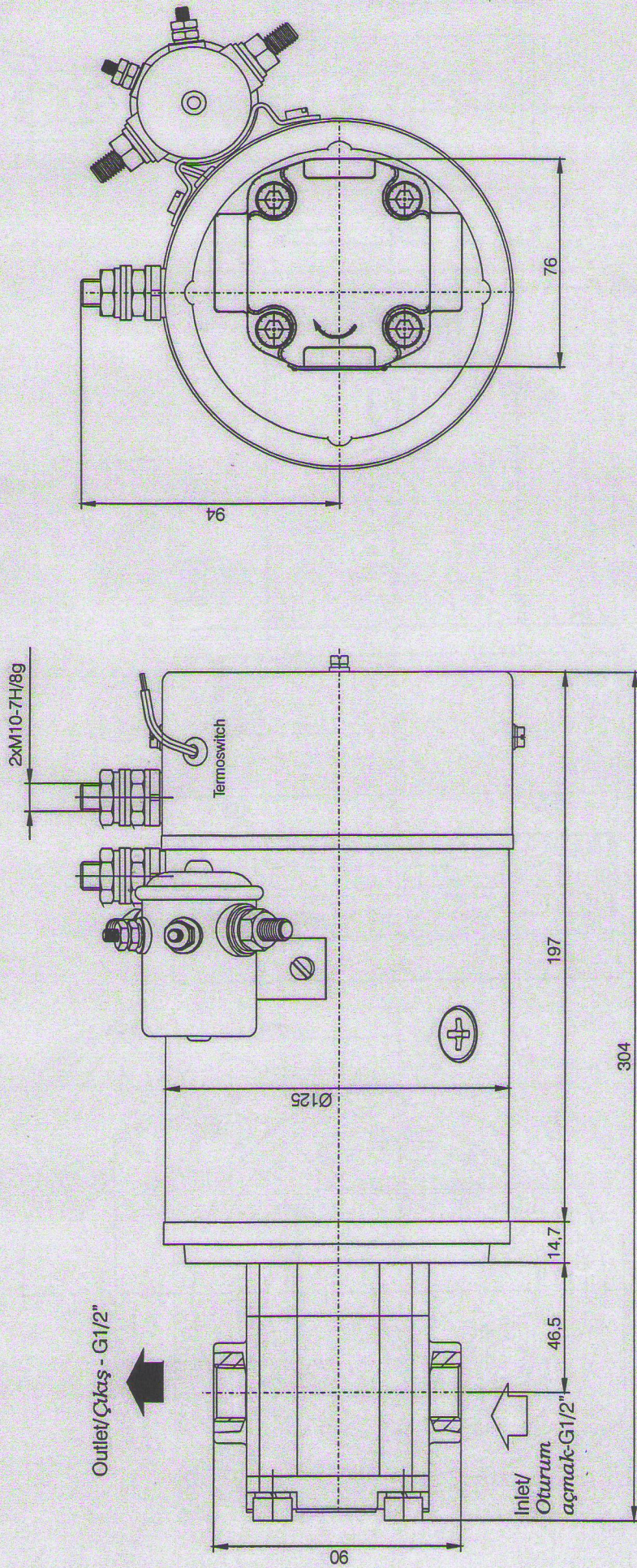


$P_1 - 1,0$ cc/rev
 $P_2 - 1,25$ cc/rev
 $P_3 - 1,6$ cc/rev
 $P_4 - 2,0$ cc/rev
 $P_5 - 2,5$ cc/rev
 $P_6 - 3,15$ cc/rev
 $P_7 - 4,2$ cc/rev

S_2 [min]	10	6	3	1,5		(P_7)
S_2 [min]	15	5	2,5	2	1,5	(P_5, P_6)
S_2 [min]	20	7	3	2,5	2	(P_3, P_4)
S_2 [min]	30	12	8	5	4	(P_1, P_2)

S_2 [min]	10	6	3	1,5		(P_7)
S_2 [min]	15	5	2,5	2	1,5	(P_5, P_6)
S_2 [min]	20	7	3	2,5	2	(P_3, P_4)
S_2 [min]	30	12	8	5	4	(P_1, P_2)

MOTOR-PUMP TYPE DCM3/2,4/35-01-10A4,2X001G/MOTORPOMPA TIPI DCM3/2,4/35-01-10A4,2X001G



BULGARIA JOINT-STOCK COMPANY

BULGARIA, 6100 KAZANLAK, 45 STOLETOV STR.
 TEL.: +359/431/62 225 , +359/431/61 132 ,
 FAX: +359/431/62 230 , +359/431/63 134

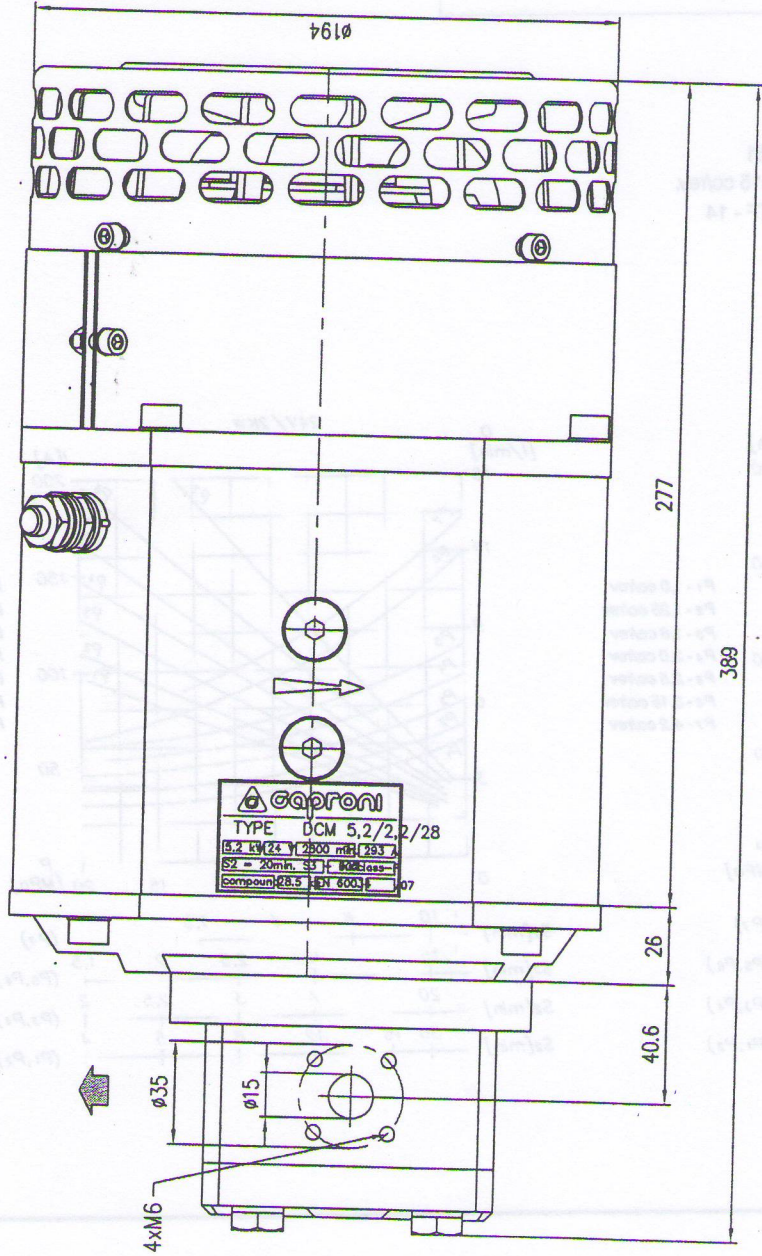
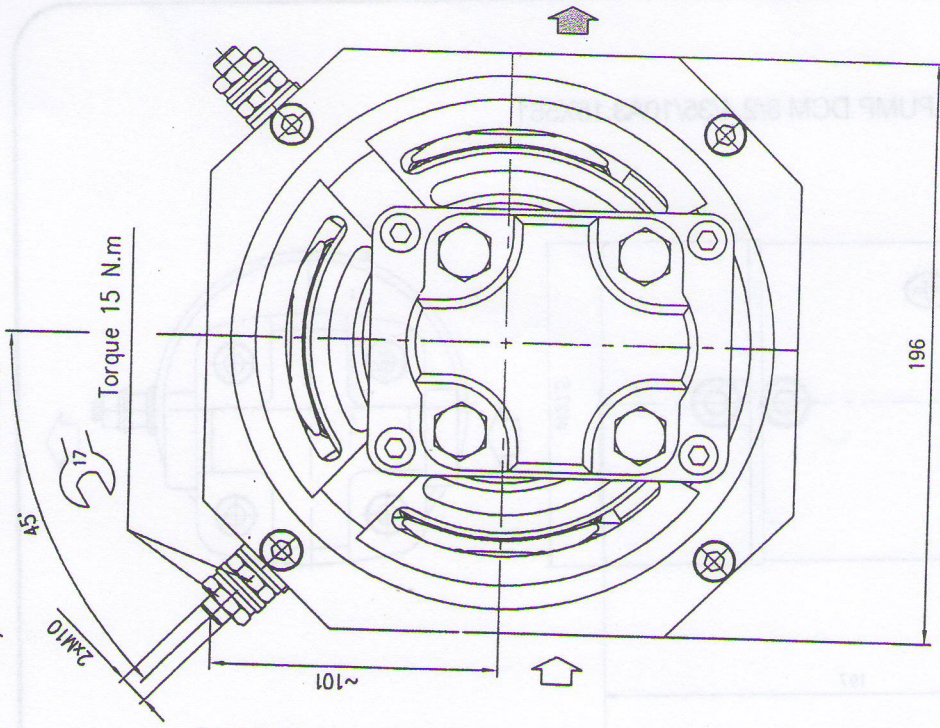
E-MAIL: CAPRONI@CAPRONI.BG , WEB: HTTP://WWW.CAPRONI.BG

PUMP/POMPA
 Type/Tipi 10A4,2X001G
 Working pressure/Çalışma basıncı 120bar.
 Flow/Debit 14l/min

MOTOR
 DCM3/2,4/35-01
 Voltage/Voltaj 24V DC
 Power/Kuvvet 3kW
 n=3500r.p.m
 S2-4,5min/S2-4,5dakika
 IP 20
 Insulation/Izolasyon F

MOTOR PUMP DCM

4/2.4/28 /20A8.2X087
4/4.8/28 /20A8.2X087



MOTOR

Voltage 24,48 V DC

Power 4 kW

n=2800 r.p.m.

S2 = 20 min ; S3 30%

IP 21

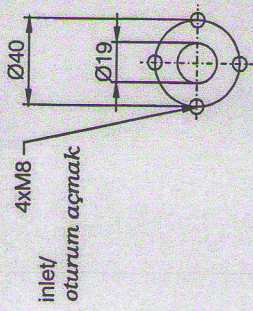
Insulation F

PUMP

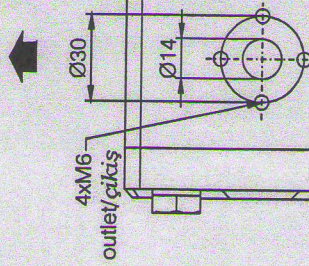
Type 20A8.2X087

Displacement 8.2 cc/rev.

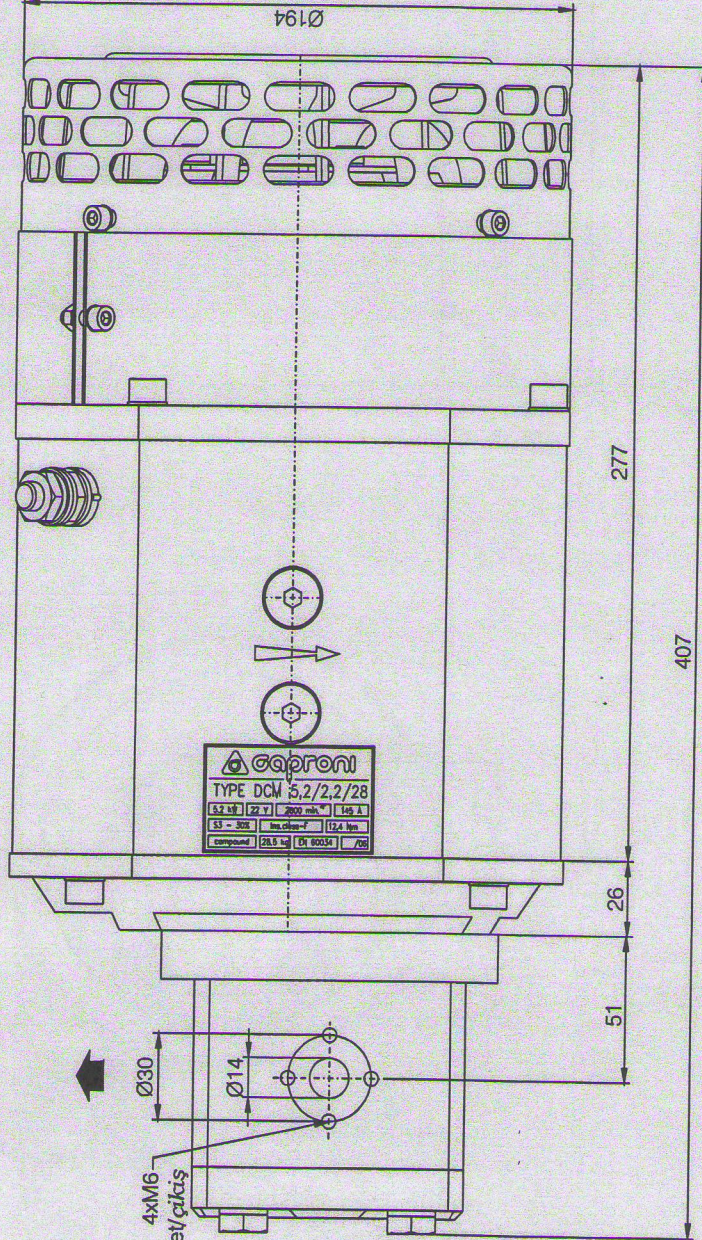
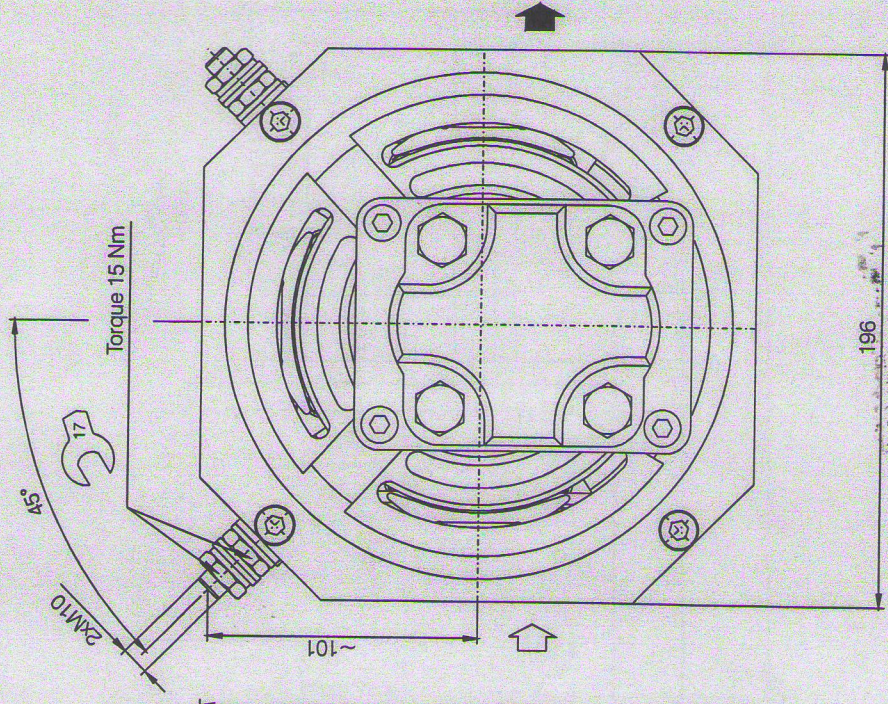
MOTOR-PUMP TYPE DCM5,2/2,4/28-20A15X697P/MOTORPOMPA TIPI DCM5,2/2,4/28-20A15X697P



4xM8



4xM6



BULGARIA JOINT-STOCK COMPANY

BULGARIA, 6100 KAZANLAK, 45 STOLETOV STR.
TEL: +359/431/62 229, +359/431/6132,
FAX: +359/431/62 230, +359/431/63 134
E-MAIL: CAPRONI@CAPRONI.BG, WEB: HTTP://WWW.CAPRONI.BG

PUMP/POMPA

Type/Tipi 20A15X697P

Geometrical volume/Geometrik hacmi 15cc/rev

Pressure/Basınç 60bar.

Flow/Debi 40l/min

MOTOR

Voltage/Voltaj 24V DC

Power/Kuvvet 5,2kW

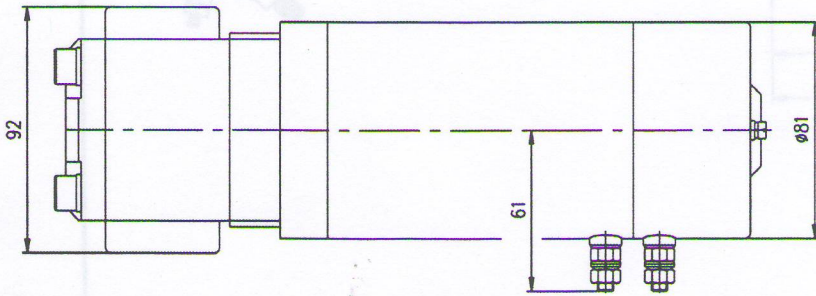
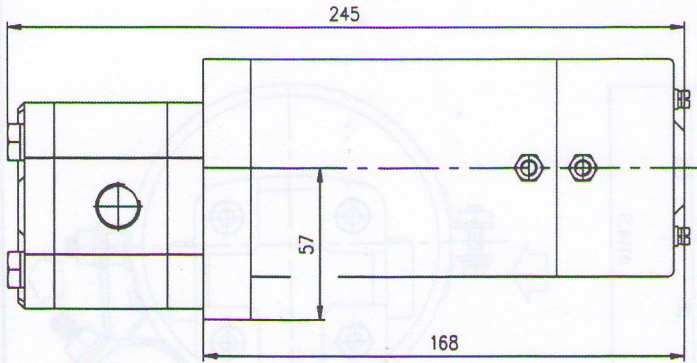
n=2800r.p.m

S2-15min/S2-15dakika

S3-30%

Current/Geçeriti - 293A

MOTOR - PUMP Type EC0.8/1.2/30-03/10A1.25X001



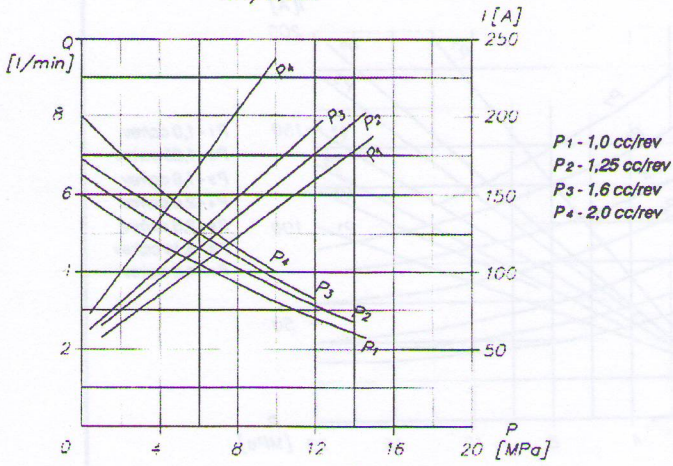
MOTOR

Voltage 12 V DC
 Power 0.8 kW
 n=3000 r.p.m.
 S2 - 1.5 min.

PUMP

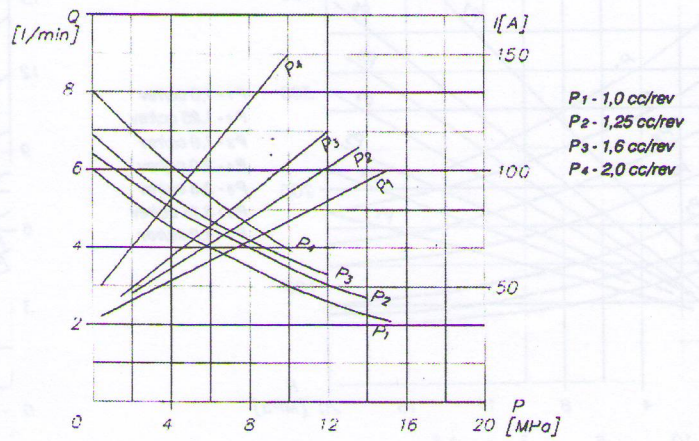
Type 10A1.25X001
 Displacement 1.25 cc/rev.
 Inlet - 1/4
 Outlet - 1/4

12V/0,8KW



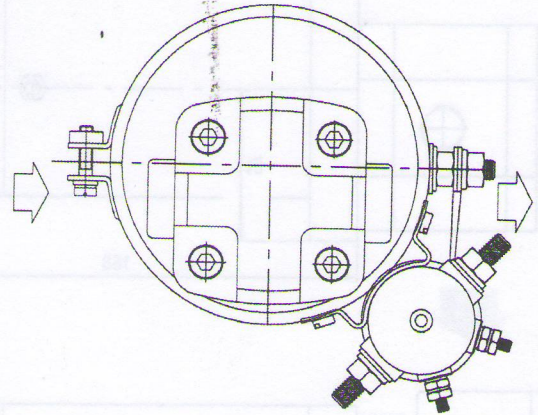
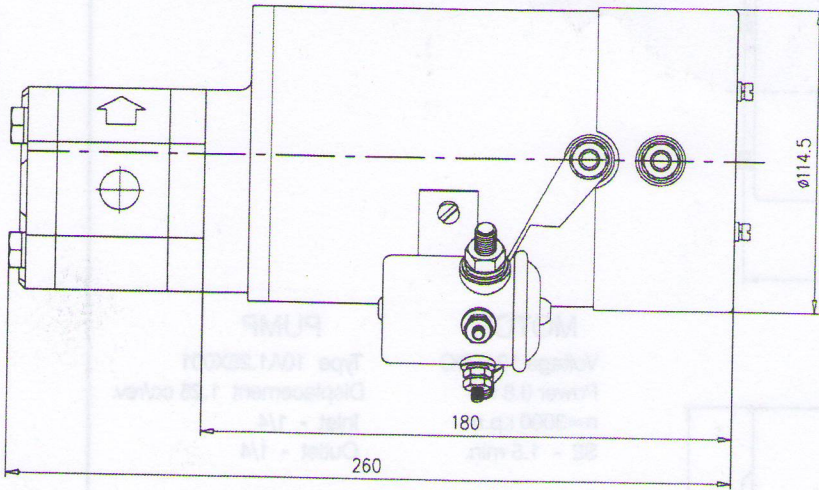
S2 [min]	2	1,5	0,5	(P4)
S2 [min]	4	3	2	(P3)
S2 [min]	4	3	2	(P1, P2)

24V/0,8KW



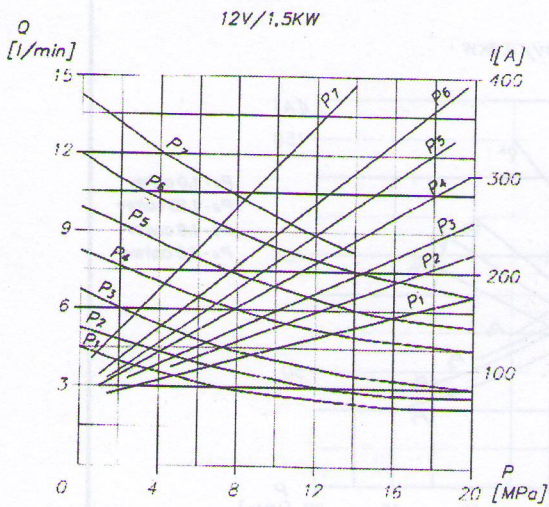
S2 [min]	2	1,5	0,5	(P4)
S2 [min]	4	3	2	(P3)
S2 [min]	4	3	2	(P1, P2)

MOTOR - PUMP Type EC1.5/12/27-33/10A2X001



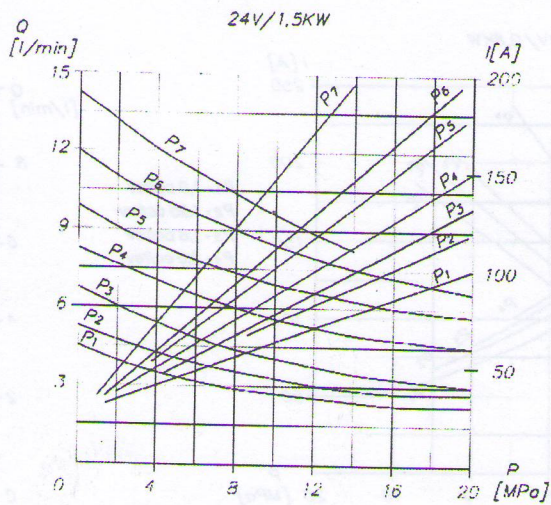
MOTOR
 Voltage 12 V DC
 Power 1.5 kW
 n=2700 r.p.m.
 S2 - 4 min.

PUMP
 Type 10A2X001
 Displacement 2 cc/rev.
 Inlet - 1/2 NPTF-14
 Outlet - 1/2 NPTF-14



P1 - 1,0 cc/rev
 P2 - 1,25 cc/rev
 P3 - 1,6 cc/rev
 P4 - 2,0 cc/rev
 P5 - 2,5 cc/rev
 P6 - 3,15 cc/rev
 P7 - 4,2 cc/rev

S ₂ [min]	10	5	3	1,5	
	15	5	2,5	2	1,5
	20	7	3	2,5	2
	30	12	8	5	4
					(P ₁)
					(P ₅ , P ₆)
					(P ₃ , P ₄)
					(P ₁ , P ₂)



P1 - 1,0 cc/rev
 P2 - 1,25 cc/rev
 P3 - 1,6 cc/rev
 P4 - 2,0 cc/rev
 P5 - 2,5 cc/rev
 P6 - 3,15 cc/rev
 P7 - 4,2 cc/rev

S ₂ [min]	10	6	3	1,5	
	15	5	2,5	2	1,5
	20	7	3	2,5	2
	30	16	12	8	5
					4
					(P ₇)
					(P ₅ , P ₆)
					(P ₃ , P ₄)
					(P ₁ , P ₂)