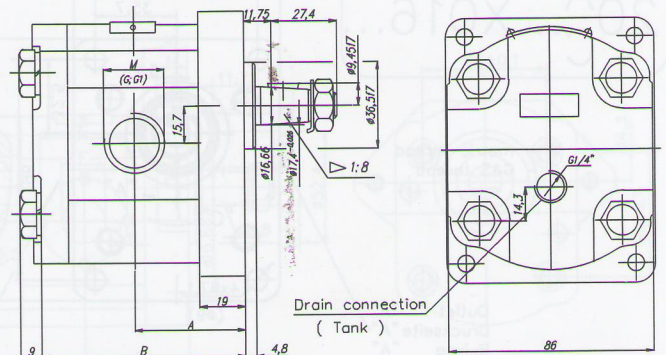
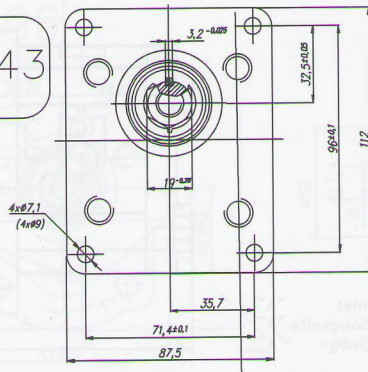
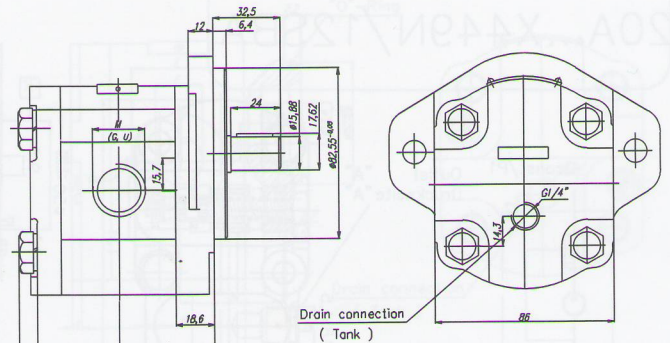
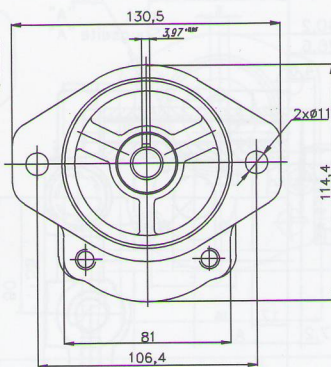


20MR...X543



Type	Displacement $q, [cm^3]$	Pressure $P_{nom}, [MPa]$	Frequency $n, [min^{-1}]$	Dimensions						
				Inlet		Outlet		M	G	G
				A	B	M	G			
mm	mm	mm	mm	mm	mm	mm	mm			
20MR4,5X543N...	4,5	20	650...3500	42,5	80	M20x1,5	G1/2"	M20x1,5	G1/2"	G1
20MR6,3X543N...	6,3			44	83					
20MR8,2X543N...	8,2			45,5	85,9					
20MR10X543N...	10			47	89					
20MR11X543N...	11			48	91,1					
20MR12X543N...	12			48,6	92,3					
20MR14X543N...	14			50	95,4					
20MR15X543N...	15			51	96,9					
20MR16X543N...	16			52	98,6					
20MR19X543N...	19			54	103,5					
20MR22X543N...	22	18	650...2500	57	108,5	M27x2	G3/4"	M27x2	G3/4"	G1"
20MR25X543N...	25			59,2	113,4					

20MR...X553N...



SAE J475 (ISO R725)

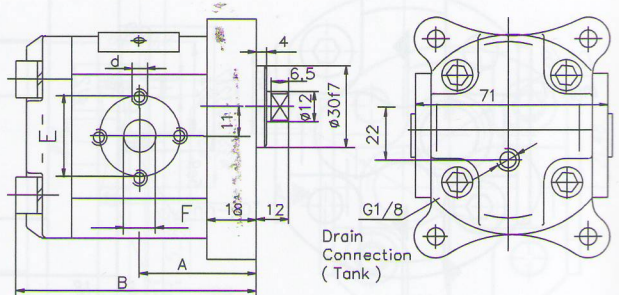
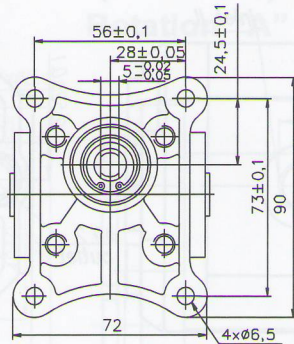
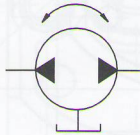


Type	Displacement $q, [cm^3]$	Pressure $P_{nom}, [MPa]$	Frequency $n, [min^{-1}]$	Dimensions							
				Inlet		Outlet		M	U	M	U
				A	B	M	G				
mm	mm	mm	mm	mm	mm	mm	mm	mm	mm		
20MR4,5X553N...	4,5	20	650...3500	41,4	78,6	M20x1,5	G1/2"	M20x1,5	G1/2"	G1	
20MR6,3X553N...	6,3			42,6	82,6						
20MR7,7X553N...	7			44,1	83,7						
20MR8,2X553N...	8,2			44,7	85,5						
20MR10X553N...	10			49,1	88,6						
20MR11X553N...	11			49,1	90,7						
20MR12X553N...	12			49,1	91,9						
20MR14X553N...	14			49,1	95						
20MR15X553N...	15			49,1	96,5						
20MR16X553N...	16			49,1	98,2						
20MR19X553N...	19	18	650...2500	49,1	103,1	M27x2	G3/4"	M27x2	G3/4"	G1"	
20MR22X553N...	22			56,6	108,1						
20MR25X553N...	25			58,8	113						



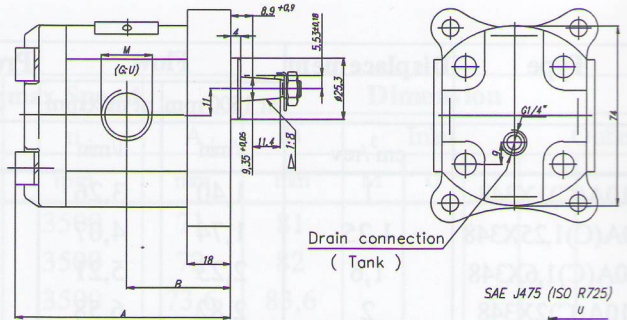
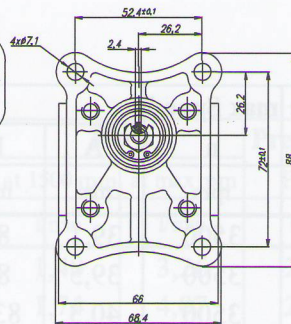
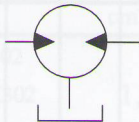
10R...X003

P<sub>max</sub>=200bar

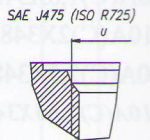


Type	Displacement	Dimensions											
		A	B	Inlet					Outlet				
				E	d	F	M	G	E	d	F	M	G
	cm <sup>3</sup>	mm		mm					mm				
10XR1X003	1	39,1	81,0	30	M6	12			30	M6	12		
10R1,25X003	1,25	39,5	82,0	30	M6	12			30	M6	12		
10R1,6X003	1,6	40,3	83,6	30	M6	12			30	M6	12		
10R2X003	2	41,1	85,2	30	M6	12			30	M6	12		
10R2,5X003	2,5	42,1	87,2	30	M6	12			30	M6	12		
10R3,15X003	3,15	43,5	89,8	30	M6	12			30	M6	12		
10R3,65X003	3,65	44,4	91,9	30	M6	12			30	M6	12		
10R4,2X003	4,2	45,5	94,1	30	M6	12			30	M6	12		
10R5X003	5	47,1	97,2	30	M6	12			30	M6	12		
10R5,7X003	5,7	48,5	100,1	30	M6	12			30	M6	12		
10R6,1X003	6,1	49,4	101,8	30	M6	12			30	M6	12		

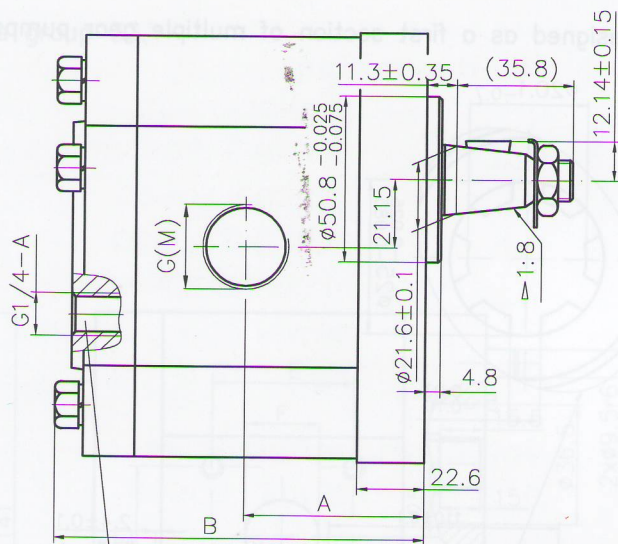
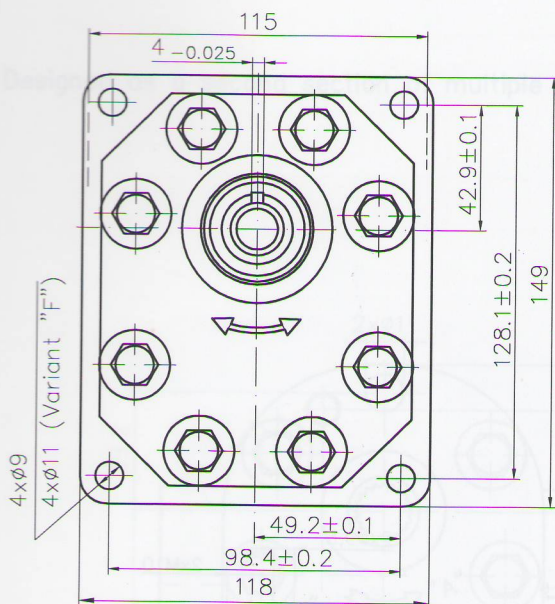
10MR...X563...  
(M,G,U)



Type	Displacement	Pressure	Frequency	Dimensions								
				A	B	Inlet			Outlet			
						M	G	U	M	G	U	
	q, [cm <sup>3</sup> ]	P <sub>nom</sub> , [MPa]	n, [min <sup>-1</sup> ]	mm	mm	mm				mm		
10MR1,6X563...	1,6	25	750...3500	40,3	83,6	M16x1,5	G3/8"	3/4-16 UNF-2B	M16x1,5	G3/8"		
10MR2X563...	2			41,1	85,2							
10MR2,5X563...	2,5			42,1	87,2							
10MR2,65X563...	2,65			42,4	87,7							
10MR3,15X563...	3,15			43,5	89,8							
10MR3,65X563...	3,65			44,4	91,9							
10MR4,2X563...	4,2			45,5	94,1							
10MR4,7X563...	4,7			46,1	96							
10MR5X563...	5			47,1	97,2							
10MR5,7X563...	5,7			48,5	100,1							
10MR6,1X563...	6,1	20	750...3000	49,4	101,8	M20x1,5	G1/2"	3/4-16 UNF-2B	M20x1,5	G1/2"		
10MR7,4X563...	7,4			52,1	107,2							
10MR8X563...	8			53,4	109,7							
10MR8,5X563...	8,5			54,4	111,7							
10MR9,8X563...	9,8			57	117							

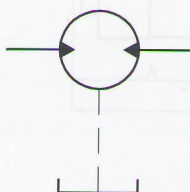






drain connection ( $P_{\text{drain}} < 0,5 \text{ bar}$ )  
(Always connect directly to the tank)

Symbol



Type for 4xφ11:  
30MR...X568HG(M)F

Type	Displacement cm <sup>3</sup>	Pressure Pmax, [bar]	Speed n [min <sup>-1</sup> ]	Dimensions					
				A	B	Inlet		Outlet	
						M	G	M	G
				mm		mm		mm	
30MR22.5X568HG(M)	22.5	200	500 ... 2500	57.6	119.7	M27x1.5	G3/4-A	M27x1.5	G3/4-A
30MR25X568HG(M)	25	200	500 ... 2500	58.3	121.1	M27x1.5	G3/4-A	M27x1.5	G3/4-A
30MR28X568HG(M)	28	200	500 ... 2500	60.2	124.7	M27x1.5	G3/4-A	M27x1.5	G3/4-A
30MR32X568HG(M)	32	200	500 ... 2500	66.5	137.3	M33x1.5	G1-A	M33x1.5	G1-A
30MR36X568HG(M)	36	200	500 ... 2300	68	140.5	M33x1.5	G1-A	M33x1.5	G1-A
30MR42X568HG(M)	42	200	500 ... 2300	70.8	146.1	M33x1.5	G1-A	M33x1.5	G1-A
30MR46X568HG(M)	46	200	500 ... 2100	72.7	149.8	M33x1.5	G1-A	M33x1.5	G1-A
30MR50X568HG(M)	50	200	500 ... 2100	74.5	153.4	M33x1.5	G1-A	M33x1.5	G1-A
30MR55X568HG(M)	55	200	500 ... 1750	76.7	157.9	M33x1.5	G1-A	M33x1.5	G1-A
30MR60X568HG(M)	60	180	500 ... 1750	78.7	162.4	M33x1.5	G1-A	M33x1.5	G1-A